

Half Metal Type Blind Ventilating Fan 半金属型百叶窗式换气扇



APB15-3-A, APB20-4-A
APB25-5-A, APB30-6-A



APB15-3-B, APB20-4-B
APB25-5-B, APB30-6-B

The metal frame is rigid.

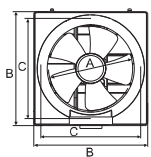
The patented motor provides longer life cycle with low power consumption.

The 5-blades fan generates higher air volume at lower noise level.

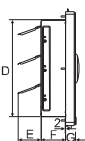
The high-accuracy balancing machine ensures good performance at minimum vibration.

金属框架耐用不易变形
专利电机, 低能耗, 寿命更长久
五片风叶设计, 令风量更大, 噪音更小
高精度的平衡检测设备, 使产品的振动控制更为卓越

External Dimension 外形尺寸图



APB-A Type



APB-B Type

Dimension Table 尺寸表

Units 单位:mm

型号 Model No.	A	B	C	D	E	F	G
APB15-3-A	150	244	210	193	66	78	30
APB20-4-A	200	294	260	243	84	67	30
APB25-5-A	250	344	310	293	68	75	30
APB30-6-A	300	401	360	343	82	82	30
APB15-3-B	150	244	210	193	66	78	63
APB20-4-B	200	294	260	243	84	67	62
APB25-5-B	250	344	310	293	68	75	59
APB30-6-B	300	401	360	343	82	82	58

Electrical Ratings 技术参数

型号 Model No.	额定电压/频率/相数 Rated Voltage/Frequency/Phase	风叶直径 Blade Diameter (mm)	功率 Power (W)	电流 Current (A)	转速 Rotating Speed (R.P.M.)	风量 Air Volume (m ³ /h)	噪音 Noise (dB(A))	电机绝缘等级 Insulation Class	净重 Net Weight (kg)
APB15-3-A	220V~/50Hz/1Ph	150	23	0.10	1520	260	38	E	1.16
APB15-3-B									1.28
APB20-4-A		200	24	0.11	1150	450	42		1.61
APB20-4-B									1.77
APB25-5-A		250	30	0.13	1200	670	45		2.05
APB25-5-B									2.26
APB30-6-A		300	35	0.16	1120	990	49		2.54
APB30-6-B									2.79

Plastic Type Window Ventilating Fan 塑料型橱窗式换气扇



APC15-2S-A
APC20-4S-A



APC10-S-G
APC15-2S-G
APC20-3S-G



APC10-S-H
APC15-2S-H
APC20-3S-H

Made of super-quality engineer plastic.

The unit is compacted.

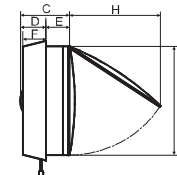
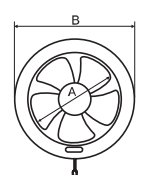
The fan generates big air volume at higher efficiency.

优质工程塑料制造

超薄型机身设计

大风量设计, 效率更高

External Dimension 外形尺寸图

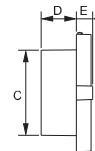
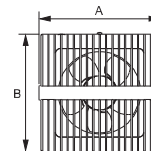


Units 单位:mm

Dimension Table 尺寸表

型号 Model No.	A	B	C	D	E	F	G	H
APC15-2S-A	150	210	80	37	43	37	178	145
APC20-4S-A	200	275	86	43	43	43	217	220

External Dimension 外形尺寸图

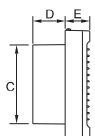
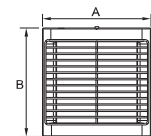


Units 单位:mm

Dimension Table 尺寸表

型号 Model No.	A	B	C	D	E
APC10-S-G	156	150	98	54	28
APC15-2S-G	207	200	146	60	28
APC20-3S-G	261	252	180	64	30

External Dimension 外形尺寸图



Units 单位:mm

Dimension Table 尺寸表

型号 Model No.	A	B	C	D	E
APC10-S-H	150	150	98	54	45
APC15-2S-H	200	200	146	60	45
APC20-3S-H	252	252	180	64	47

Electrical Ratings 技术参数

型号 Model No.	额定电压/频率/相数 Rated Voltage/Frequency/Phase	风叶直径 Blade Diameter (mm)	功率 Power (W)	电流 Current (A)	转速 Rotating Speed (R.P.M.)	风量 Air Volume (m ³ /h)	噪音 Noise (dB(A))	电机绝缘等级 Insulation Class	净重 Net Weight (kg)
APC15-2S-A	220V~/50Hz/1Ph	150	16	0.07	1450	228	39	E	0.65
APC20-4S-A		200	16	0.07	1620	342	43		0.97
APC10-S-G		100	10	0.07	2450	72	41		0.57
APC15-2S-G		150	13	0.08	1700	168	42		0.69
APC20-3S-G		200	16.5	0.11	1500	252	43		0.99
APC10-S-H		100	12	0.07	2530	78	41		0.63
APC15-2S-H		150	14	0.08	1760	156	42		0.77
APC20-3S-H		200	17	0.11	1530	210	44		1.13