

13-48 Type Centrifugal Ventilator

13-48式离心风机



The unit is intended for delivering flame-retardant, non-explosive and non-corrosive gas that the temperature should not exceed 80°C and particles are no bigger than 150 mg/m³.

With a rational structure, it could be installed at any angle, like 0°, 90°, 180° and 270°.

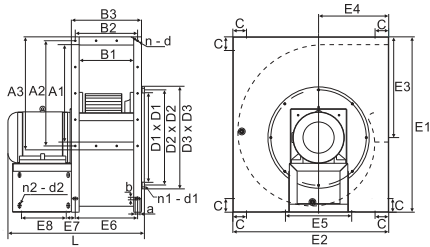
The major applications include kitchen extraction in hotels and restaurants, professional kitchen equipments, professional purification equipment, industrial and mining enterprises.

13-48式离心风机适用于输送非易燃、无腐蚀的气体，其气体温度不大于80°C，气体内所含尘土及硬质颗粒物不超过150 mg/m³。

整机结构科学，可实现0°、90°、180°和270°共四种角度互换。

适用于：酒楼的厨房抽油使用；专业厨具设备配套使用；专业净化设备配套使用和工矿企业通风换气等地方使用。

External Dimensions 外形尺寸图



Inlet/Outlet Dimension Table 进/出口尺寸表

Units 单位: mm

| 型号 Model No. | 出风口 Outlet | | | | | | 进风口 Inlet | | | | |
|-----------------|------------|-----|-----|-----|-----|-----|-----------|---------|---------|---------|--------|
| | A1 | A2 | A3 | B1 | B2 | B3 | n-d | D1xD1 | D2xD2 | D3xD3 | n1-d1 |
| 2.5 | 280 | 312 | 350 | 160 | 190 | 220 | 10-φ7 | 260x260 | 280x280 | 326x326 | 8-φ7 |
| 2.8 | 315 | 348 | 385 | 180 | 210 | 240 | 10-φ7 | 290x290 | 310x310 | 356x356 | 8-φ7 |
| 3.15 | 355 | 387 | 425 | 200 | 230 | 260 | 10-φ7 | 325x325 | 345x345 | 391x391 | 8-φ7 |
| 3.55 | 400 | 432 | 462 | 225 | 255 | 285 | 12-φ7 | 365x365 | 385x385 | 431x431 | 8-φ7 |
| 4.0 | 450 | 492 | 530 | 250 | 290 | 330 | 12-φ7 | 410x410 | 430x430 | 476x476 | 8-φ7 |
| 4.5 | 500 | 540 | 580 | 280 | 320 | 360 | 14-φ7 | 460x460 | 488x488 | 526x526 | 12-φ10 |
| 5.0 | 560 | 600 | 640 | 315 | 355 | 395 | 16-φ10 | 510x510 | 538x538 | 576x576 | 12-φ10 |
| 5.6 | 630 | 672 | 712 | 355 | 395 | 435 | 18-φ10 | 570x570 | 598x598 | 636x636 | 12-φ12 |
| 6.3 | 710 | 756 | 798 | 400 | 445 | 490 | 20-φ10 | 640x640 | 668x668 | 705x705 | 12-φ12 |

Dimension Table 尺寸表

Unit 单位: mm

| 型号 Model No. | 电机功率 Motor Power | E1 | E2 | E3 | E4 | E5 | E6 | E7 | E8 | L | a x b | C | n2 - d2 |
|-----------------|---------------------|------|------|-----|-------|-----|-----|------|-----|------|---------|----|---------|
| 2.5-4 | 0.75 kw | 515 | 470 | 295 | 220 | 225 | 190 | 37.5 | 115 | 475 | 20 x 10 | 50 | 4-φ10 |
| 2.8-4 | 1.5 kw | 565 | 520 | 326 | 238.5 | 230 | 210 | 42 | 145 | 540 | 20 x 10 | 50 | 4-φ10 |
| 3.15-6 | 0.75 kw | 635 | 580 | 365 | 270 | 250 | 230 | 42 | 130 | 540 | 20 x 10 | 50 | 4-φ10 |
| 3.15-4 | 2.2 kw | 635 | 580 | 365 | 270 | 250 | 230 | 42 | 160 | 585 | 20 x 10 | 50 | 4-φ10 |
| 3.55-6 | 1.1 kw | 710 | 655 | 407 | 303 | 225 | 255 | 42 | 145 | 580 | 20 x 10 | 50 | 4-φ10 |
| 3.55-4 | 4 kw | 710 | 655 | 407 | 303 | 295 | 255 | 42 | 175 | 630 | 20 x 10 | 50 | 4-φ13 |
| 4.0-4 | 7.5 kw | 800 | 730 | 464 | 336 | 328 | 290 | 44 | 225 | 750 | 25 x 13 | 70 | 4-φ13 |
| 4.5-6 | 4 kw | 900 | 800 | 517 | 360 | 340 | 320 | 46 | 230 | 780 | 25 x 13 | 70 | 4-φ13 |
| | 5.5 kw | 900 | 800 | 517 | 360 | 340 | 320 | 46 | 230 | 780 | 25 x 13 | 70 | 4-φ13 |
| 5.0-6 | 5.5 kw | 1000 | 890 | 570 | 390 | 380 | 355 | 47 | 262 | 815 | 25 x 13 | 70 | 4-φ13 |
| | 7.5 kw | 1000 | 890 | 570 | 390 | 380 | 355 | 47 | 262 | 885 | 25 x 13 | 70 | 4-φ13 |
| 5.6-6 | 11 kw | 1110 | 990 | 633 | 435 | 378 | 395 | 48 | 306 | 980 | 25 x 13 | 70 | 4-φ13 |
| 6.3-6 | 15 kw | 1250 | 1120 | 715 | 490 | 448 | 445 | 56 | 360 | 1095 | 25 x 13 | 65 | 4-φ13 |

13-48 Type Centrifugal Ventilator

13-48式离心风机

Electrical Ratings 技术参数

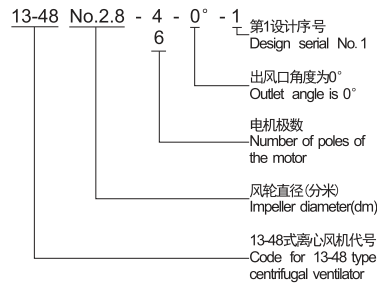
| 型号 Model No. | 转速 Rotating Speed (R.F.M.) | 设计序号 Design Serial No. | 风量 Air Volume (m ³ /h) | 静压 Static Pressure (Pa) | 全压 Total Pressure (Pa) | 噪音 Noise (dB(A)) | 功率 Power (kw) | 净重 Net Weight (kg) |
|-----------------|-------------------------------|---------------------------|--------------------------------------|----------------------------|---------------------------|---------------------|------------------|-----------------------|
| 13-48No.2.5-4 | 1420 | 1 | 1700 | 379 | 446 | 69 | 0.75 | 42.0 |
| | | 2 | 1800 | 377 | 454 | | | |
| | | 3 | 1900 | 348 | 432 | | | |
| | | 4 | 2000 | 321 | 414 | | | |
| | | 5 | 2500 | 226 | 370 | | | |
| 13-48No.2.8-4 | 1450 | 1 | 2200 | 601 | 668 | 72 | 1.5 | 51.0 |
| | | 2 | 2400 | 576 | 658 | | | |
| | | 3 | 2800 | 554 | 662 | | | |
| | | 4 | 3100 | 492 | 627 | | | |
| | | 5 | 3500 | 393 | 562 | | | |
| 13-48No.3.15-6 | 910 | 1 | 1506 | 317 | 338 | 67 | 0.75 | 54.0 |
| | | 2 | 1883 | 290 | 323 | | | |
| | | 3 | 2259 | 266 | 313 | | | |
| | | 4 | 2636 | 219 | 283 | | | |
| | | 5 | 2824 | 181 | 254 | | | |
| 13-48No.3.15-4 | 1450 | 1 | 2400 | 805 | 858 | 75 | 2.2 | 64.0 |
| | | 2 | 3000 | 737 | 820 | | | |
| | | 3 | 3600 | 675 | 794 | | | |
| | | 4 | 4200 | 557 | 719 | | | |
| | | 5 | 4500 | 458 | 644 | | | |
| 13-48No.3.55-6 | 960 | 1 | 2118 | 466 | 492 | 69 | 1.1 | 63.0 |
| | | 2 | 3707 | 418 | 494 | | | |
| | | 3 | 3972 | 373 | 469 | | | |
| | | 4 | 4634 | 306 | 426 | | | |
| | | 5 | 5164 | 243 | 390 | | | |
| 13-48No.3.55-4 | 1450 | 1 | 3200 | 1064 | 1123 | 79 | 4 | 87.0 |
| | | 2 | 5600 | 953 | 1126 | | | |
| | | 3 | 6000 | 852 | 1070 | | | |
| | | 4 | 7000 | 698 | 972 | | | |
| | | 5 | 7800 | 555 | 890 | | | |

| 型号 Model No. | 转速 Rotating Speed (R.F.M.) | 设计序号 Design Serial No. | 风量 Air Volume (m ³ /h) | 静压 Static Pressure (Pa) | 全压 Total Pressure (Pa) | 噪音 Noise (dB(A)) | 功率 Power (kw) | 净重 Net Weight (kg) |
|-----------------|-------------------------------|---------------------------|--------------------------------------|----------------------------|---------------------------|---------------------|------------------|-----------------------|
| 13-48No.4.0-4 | 1450 | 1 | 9500 | 980 | 1280 | 84 | 7.5 | 136.0 |
| | | 2 | 10000 | 880 | 1220 | | | |
| | | 3 | 11000 | 690 | 1100 | | | |
| 13-48No.4.5-6 | 960 | 1 | 4222 | 717 | 757 | 77 | 4 | 137.0 |
| | | 2 | 5375 | 749 | 814 | | | |
| | | 3 | 7134 | 760 | 875 | | | |
| | | 4 | 8968 | 654 | 836 | | | |
| | | 5 | 10486 | 515 | 764 | | | |
| | | 6 | 11000 | 467 | 737 | | | |
| | | 7 | 11500 | 422 | 706 | | | |
| | | 8 | 12000 | 378 | 673 | | | |
| 13-48No.5.0-6 | 960 | 1 | 6000 | 834 | 887 | 79 | 5.5 | 168.0 |
| | | 2 | 8000 | 838 | 993 | | | |
| | | 3 | 10000 | 753 | 901 | | | |
| | | 4 | 11000 | 679 | 858 | | | |
| | | 5 | 13000 | 495 | 746 | | | |
| | | 6 | 13500 | 410 | 695 | | | |
| | | 7 | 14000 | 355 | 660 | | | |
| | | 8 | 14500 | 303 | 635 | | | |
| 13-48No.5.5-6 | 970 | 1 | 18000 | 700 | 1000 | 82 | 11 | 262.0 |
| | | 2 | 20000 | 500 | 900 | | | |
| | | 3 | 21000 | 450 | 850 | | | |
| 13-48No.6.3-6 | 970 | 1 | 14819 | 1468 | 1593 | 85 | 15 | 343.0 |
| | | 2 | 18861 | 1432 | 1637 | | | |
| | | 3 | 21555 | 1330 | 1597 | | | |
| | | 4 | 25500 | 1099 | 1475 | | | |

Remark: 1. The technical data is tested at 380V~ / 50Hz / 3Ph.
2. Customized rated voltage and frequency are available.

备注: 1、以上所有参数均由380V~ / 50Hz / 3Ph进行测试。
2、可根据客户的额定电压和频率来订做合适的产品。

Model Explanation 型号说明



Performance Curve 性能曲线图

